

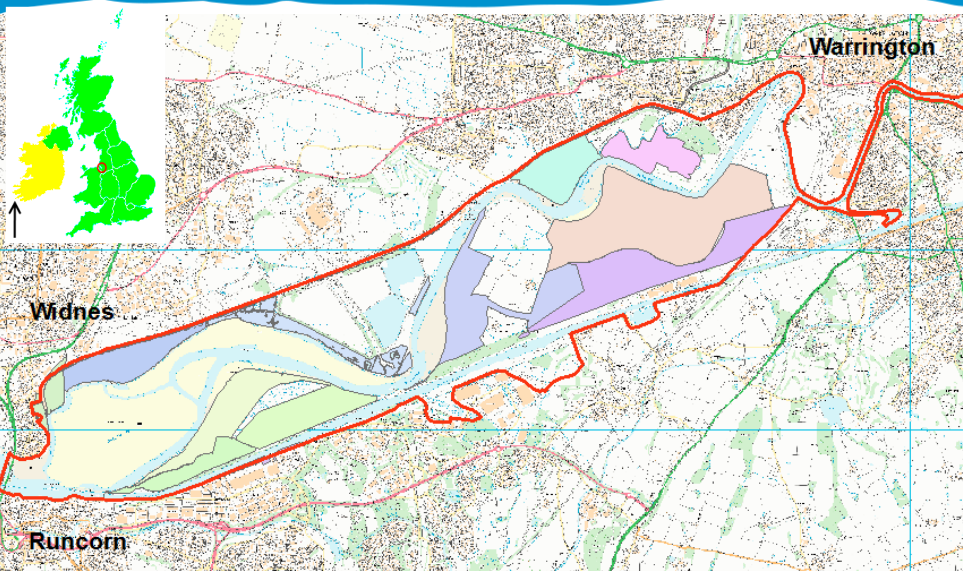


# VALUING NATURE

**An ecosystem approach to  
assess the impacts of the  
construction and operation of  
the Mersey Gateway Crossing  
on the Upper Mersey Estuary**

Andrea Perz – PhD researcher, University of  
Salford

# What is my research area?



- Assessing ES in a diverse study area
- Identifying scenarios of ES changes
- Identifying management options for UME



# Why did I want to attend the Business Impact School?

1. To see how businesses use ES research and incorporate the value of nature into their business philosophy.
2. To learn how to communicate the concept of ES and the decision making process behind it.
3. To exchange ideas and meet new people.

# Major opportunities and/or challenges for getting research used by businesses?

## Opportunities

- Adaptive management → long-term planning
- Stakeholder involvement
- Better understanding of assets

## Challenges

- Not a 'formula'
- The wider picture needs to be addressed.

